



# WIRELESS - Detective

## WLAN Lawful Interception System



Email



Chat



Web



FTP



P2P



TELNET



Webcam Video



Video Stream



Online Game



VOIP



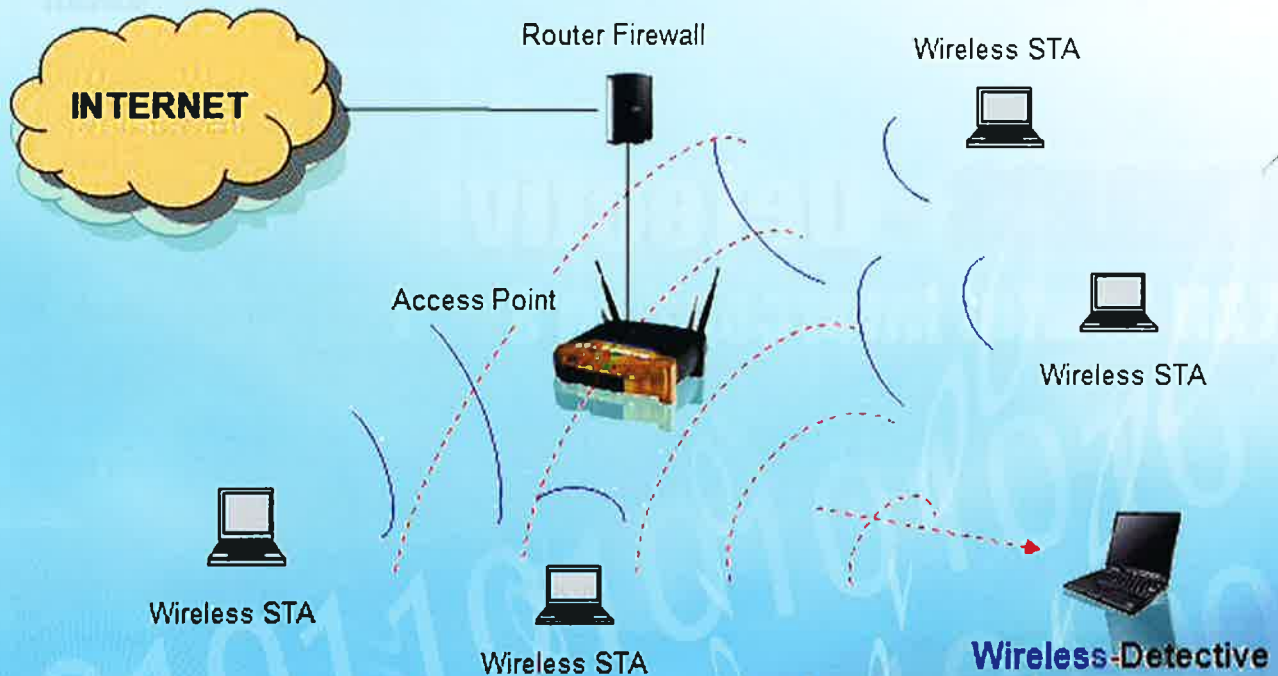
- A special device for forensics investigator, police, military, anti-terrorism, national security and intelligence agencies.
- The most advanced and All-in-One WLAN/Wi-Fi Internet lawful interception system.
- IEEE 802.11a/b/g/n WLAN/Wi-Fi Internet forensics investigation and analysis system.
- Sniff WLAN/Wi-Fi traffic within the coverage range of up to 100 meters, decode and reconstruct the traffic back to original content format.
- The best portable and mobile WLAN/Wi-Fi interception system.

Note: We welcome OEM, ODM and special project customization request.



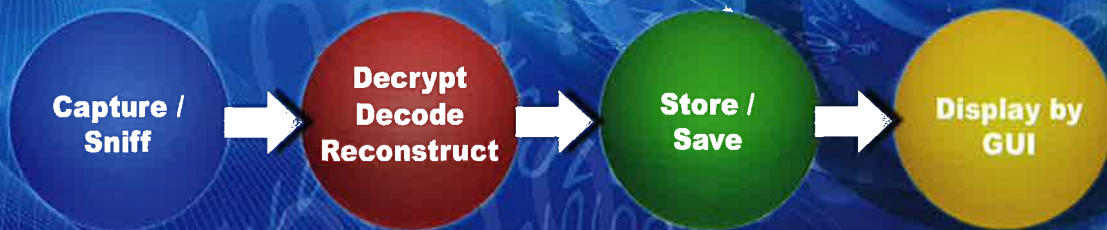


# WIRELESS - Detective®



Wireless -Detective captures / sniffs WLAN traffic from a single / defined channel, an AP / Wireless Router or a station. It then decrypts (WEP key if available) decodes and reconstructs the WLAN packets back to the original content format.

## Application Flow



### Information obtainable from a WLAN AP / Wireless Router:

1. BSSID of AP (MAC address)
2. Channel
3. The number of STAs
4. The number of encrypted packets
5. The number of data packets
6. Additional information of AP (the manufacturer of AP, the manufacturer of AP IC component has to be authenticated through international registration)
7. Noise level and signal level
8. SSID or ESSID
9. Type of Wireless LAN: Probe, Ad-hoc or Infra
10. WEP (wired equivalent privacy protocol) status
11. The amount of transferred Wireless LAN packets

### Information obtainable from a station (STA) includes:

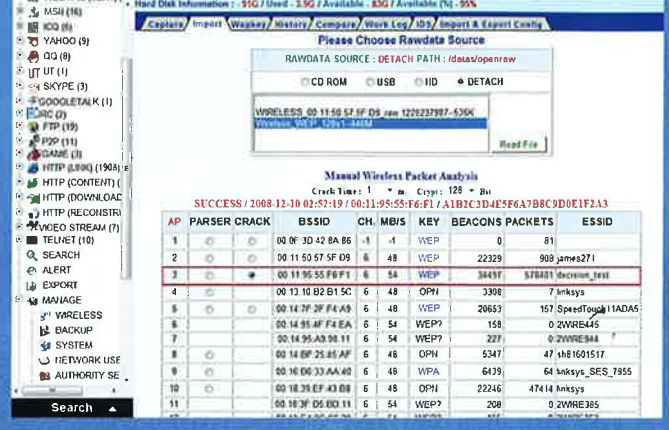
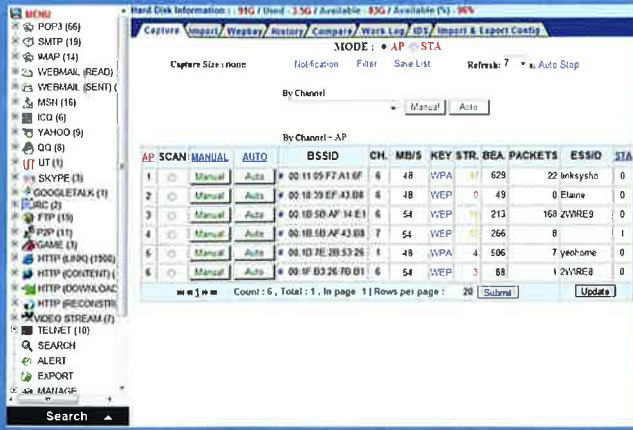
1. The number of encrypted packets through this STA
2. The number of packets through this STA
3. IP Address of STA
4. MAC Address of STA
5. The manufacturer of STA (the one has been authenticated)
6. The highest transferring rate of STA
7. Noise level and signal level of STA
8. Type of STA (Established, To-DS or From-DS)



# Administration and Management (sample screenshots)

## 1. Scanning Available Wireless Networks

## 2. Import Analysis - WEP Decryption



# Internet Raw Data Reconstruction (sample screenshots)

## 1. Email - Webmail

## 2. IM - Chat



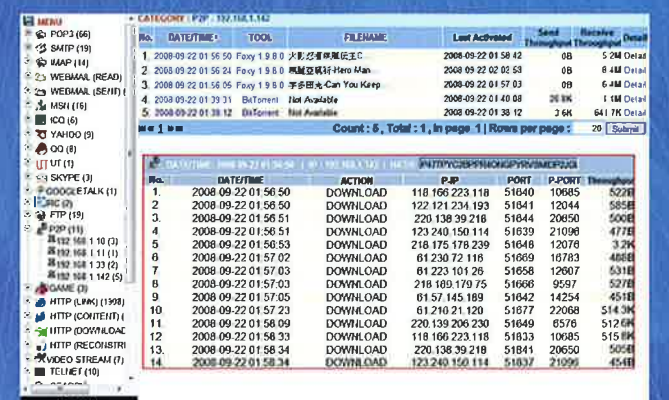
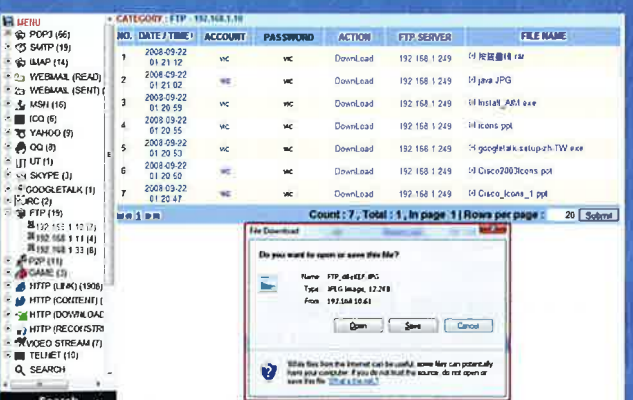
## 3. HTTP - Web Browsing

## 4. Telnet







## 5. FTP

## 6. P2P



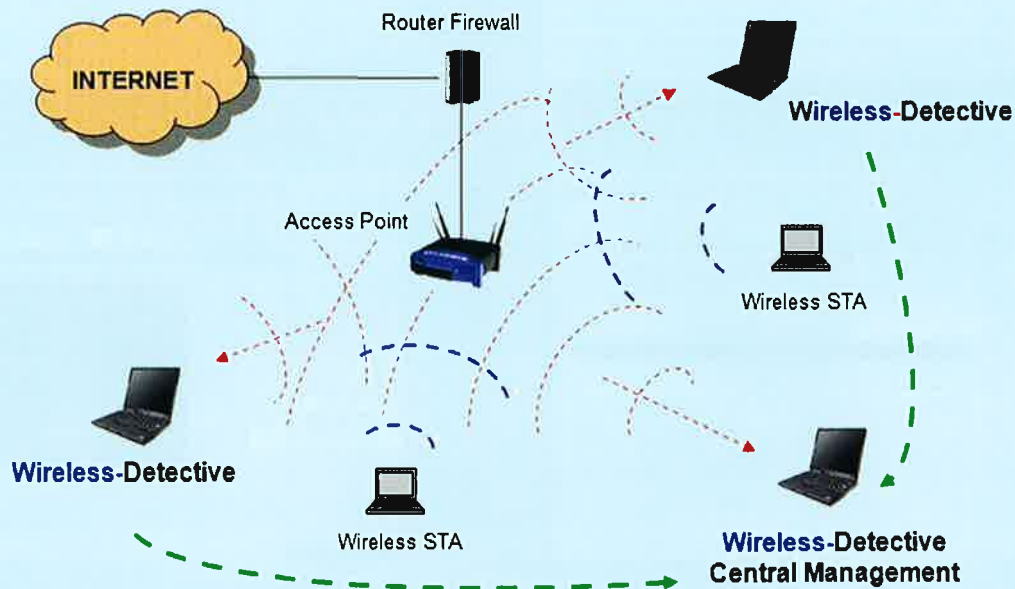
Note : Internet protocols supported : Email (POP3, SMTP, IMAP), Webmail (Yahoo Mail, Windows Live Hotmail, Gmail, etc.), IM - Chat (Yahoo, MSN, ICQ, AOL, QQ, IRC, Skype Voice Call Session Log, Google Talk TW), HTTP (Link, Content, Reconstruct, Upload/Download), Video Stream, Telnet, FTP, P2P, Online Games, etc.

# WIRELESS - Detective® Models

Model	Photo	HDD Size	RAM	Coverage
Wireless-Detective Standard System		160G and above	1G and above	Indoors = 0 - 20 meters Outdoors = 0 - 60 meters (line of sight)
Wireless-Detective Enhanced System		160G and above	1G and above	Indoors = 0 - 30 meters Outdoors = 0 - 100 meters (line of sight)
Wireless-Detective Extreme-2		Wireless-Detective Extreme -2 and -3 are capable to ensure more efficient and complete WLAN raw data packets capture. This will reduce the certain percentage (%) of packet lost issue and enable the system to produce more complete reconstruction in both outdoor and indoor environment.		
Wireless-Detective Extreme-3				

■ Product picture for reference only.

## Wireless-Detective Extreme System Implementation



Distributor / Partner :



### DECISION GROUP

URL : [www.decision.com.tw](http://www.decision.com.tw)  
[www.edecision4u.com](http://www.edecision4u.com)

Address : 4/F No.31, Alley 4, Lane 36, Sec. 5,  
Ming-Sheng East Rd, Taipei Taiwan ROC

Phone : +886 2 27665753 Fax : +886 2 27665702

Email : [decision@decision.com.tw](mailto:decision@decision.com.tw)  
[decision@ms1.hinet.net](mailto:decision@ms1.hinet.net)